



Structural Analysis & Design Software



www.dlubal.com

Part 6 | Introduction to Timber Design

RFEM 6 for Students



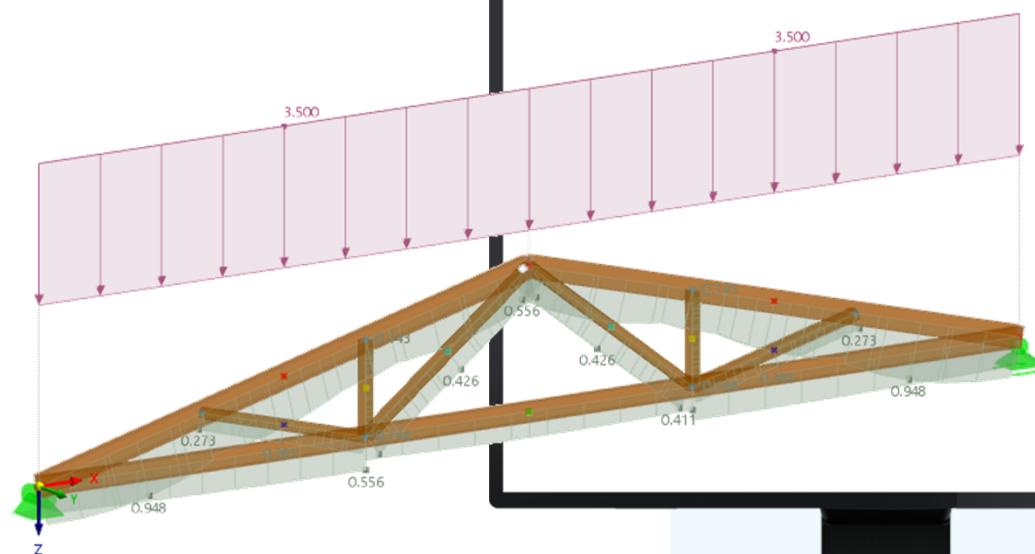
**Dipl.-Ing. (FH) Jürgen Theilmann,
M.Eng.**
Organizer

Customer Support
Dlubal Software GmbH



Dipl.-Ing. Rebecca Göbel
Co-Organizer

Customer Support
Dlubal Software GmbH



Questions During the Presentation



GoToWebinar Control Panel
Desktop



The screenshot shows the GoToWebinar desktop control panel with three annotations:

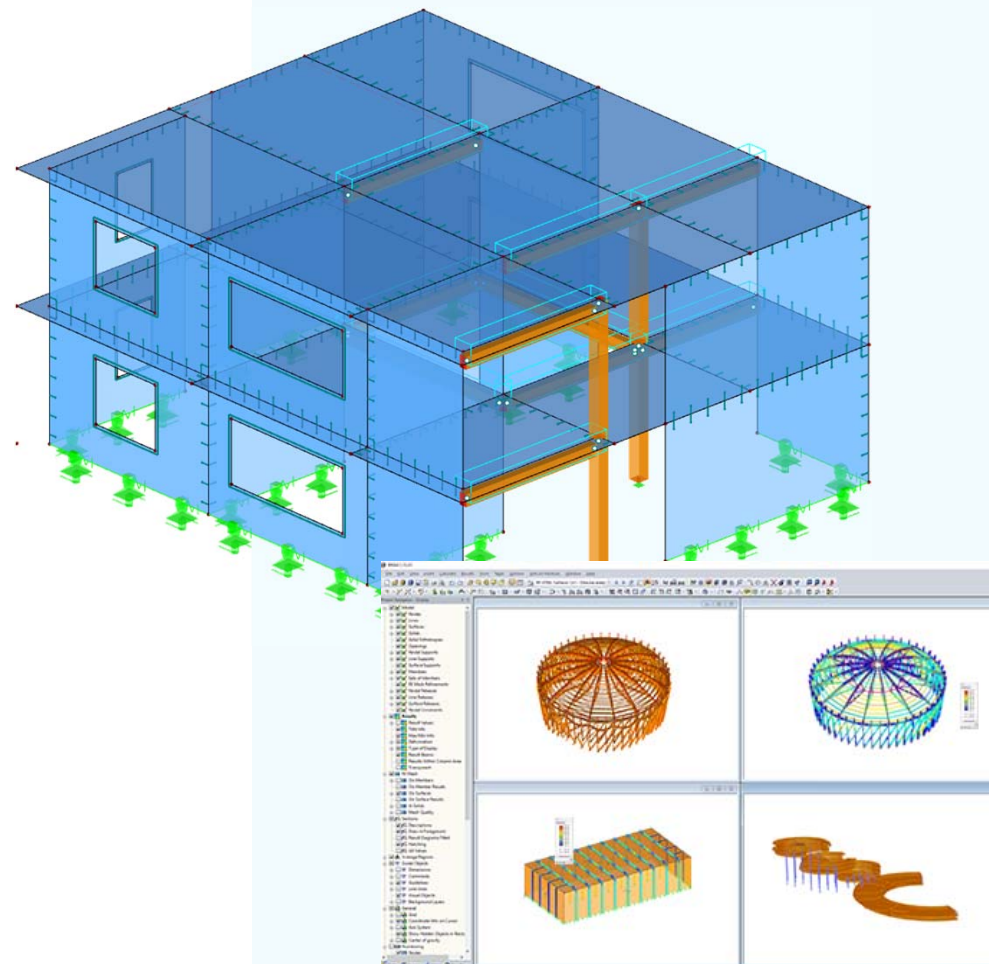
- Show or hide control panel:** A blue arrow points to the top-left corner of the control panel, where a small orange arrow icon is located.
- Adjust audio settings:** A blue arrow points to the 'Audio' section of the control panel, which includes options for 'Computer audio' and 'Phone call', a 'MUTED' indicator, and dropdown menus for microphone and speaker selection.
- Ask questions:** A blue arrow points to the 'Questions' section, which features a text input field with the placeholder '[Enter a question for staff]' and a 'Send' button.

Additional details in the screenshot include a 'Sound Check' indicator with a green signal bar, a 'Webinar ID: 373-901-987' field, and the GoToWebinar logo at the bottom.



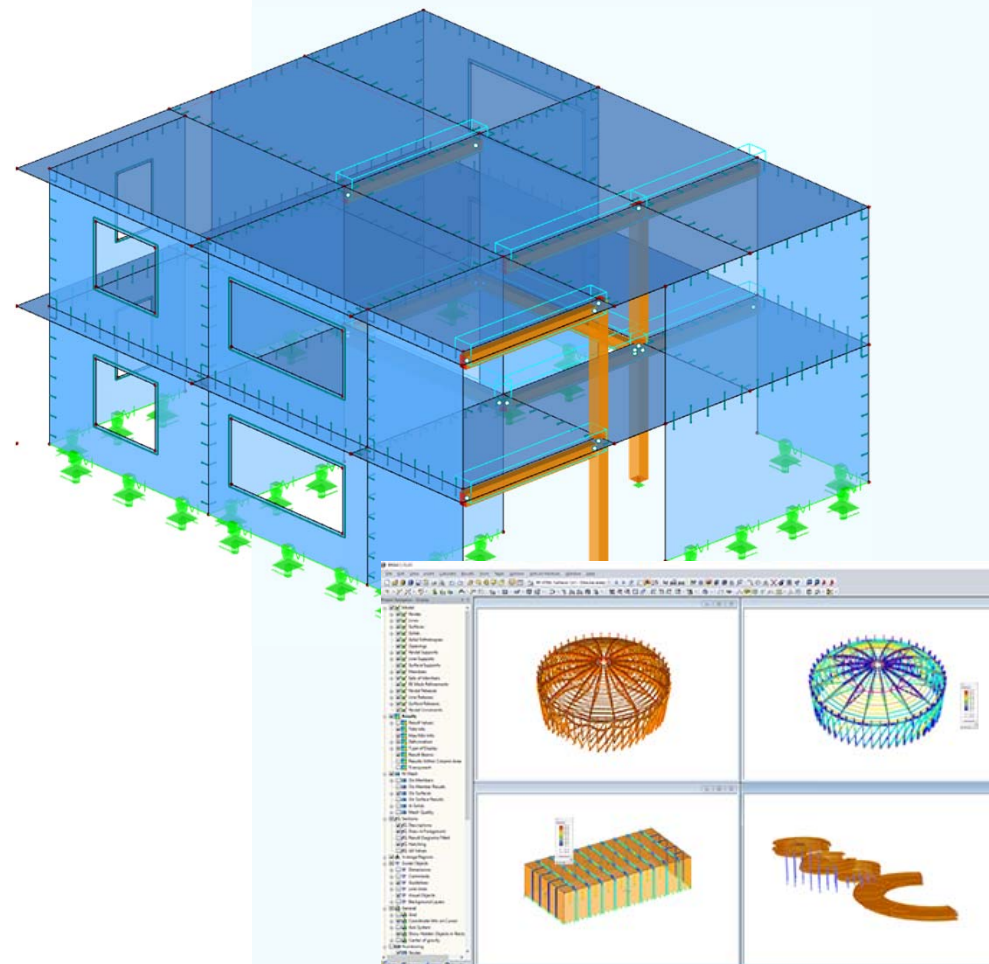
Training Series

- 01 Introduction to Member Design
- 02 Introduction to Strength of Materials
- 03 Introduction to FEM / FEA
- 04 Steel Design
- 05 Concrete Design
- 06 Timber Design



Training Series

- 01 Introduction to Member Design
- 02 Introduction to Strength of Materials
- 03 Introduction to FEM / FEA
- 04 Steel Design
- 05 Concrete Design
- 06 Timber Design



CONTENT

- 01 **Introductory Example: Timber Column**
- 02 **Design Supports & Notches**
- 03 **Duopitch Roof Beam**
- 04 **Truss**

