



Structural Analysis & Design Software



www.dlubal.com



Amy Heilig, PE
Presenter

CEO - USA Office



Alex Bacon, EIT
Moderator

Technical Support Engineer



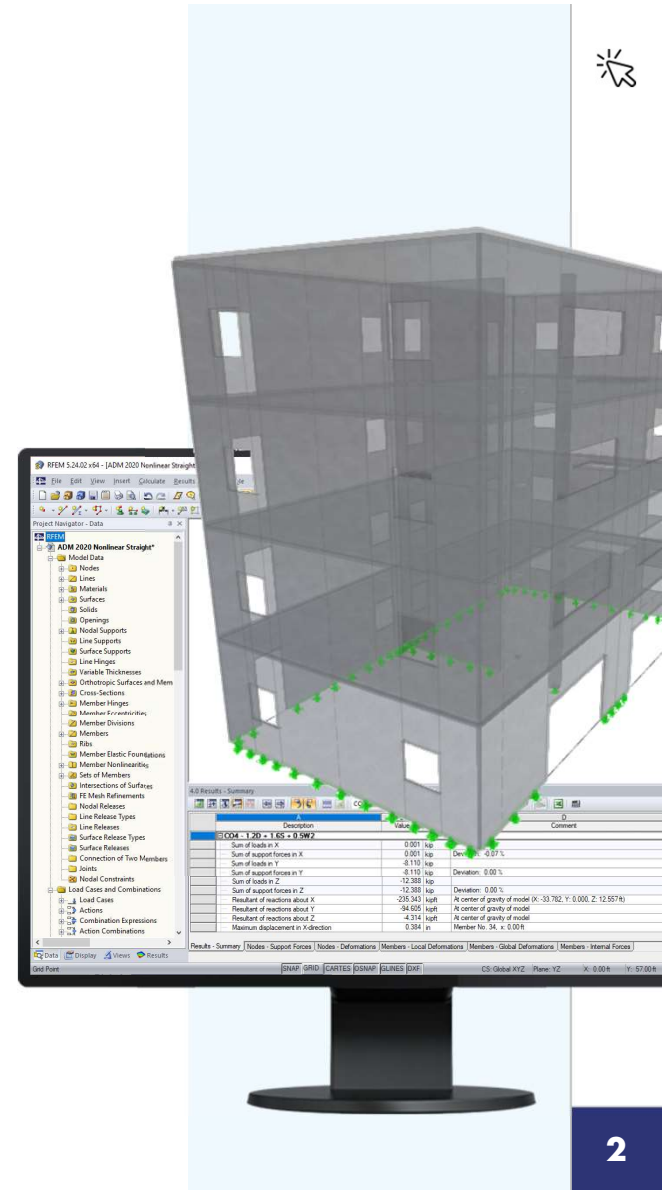
Cisca Tjoa, PE
Moderator

Technical Support Engineer



Webinar

CSA A23.3:19 Concrete Building Design in RFEM 6



Questions During the Presentation

GoToWebinar Control Panel Desktop

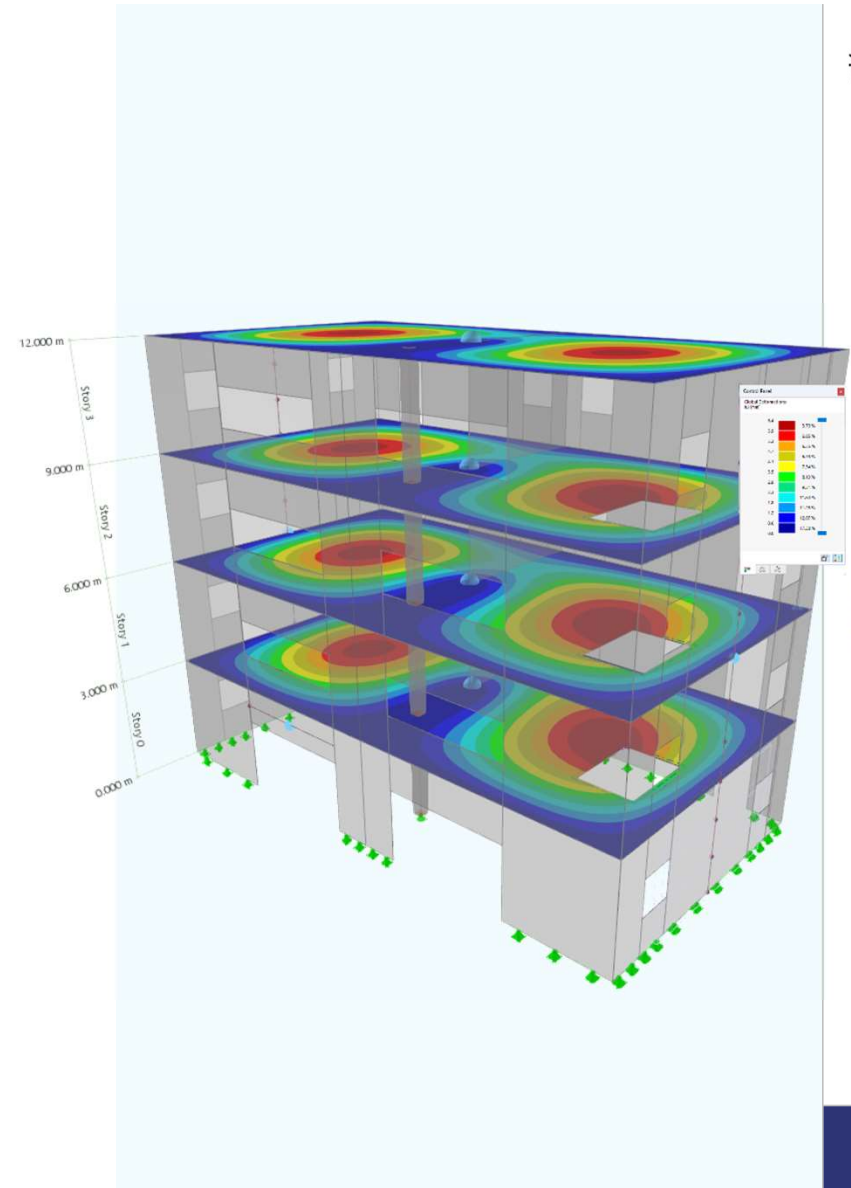


The screenshot shows the GoToWebinar desktop control panel. It features a sidebar on the left with icons for audio, chat, and a hand. The main window is divided into sections: 'Audio' with options for 'Computer audio' (selected) and 'Phone call', a 'MUTED' status, and a volume slider; 'Questions' with a text input field containing '[Enter a question for staff]' and a 'Send' button; and a footer with 'Webinar ID: 373-901-987' and the 'GoToWebinar' logo.

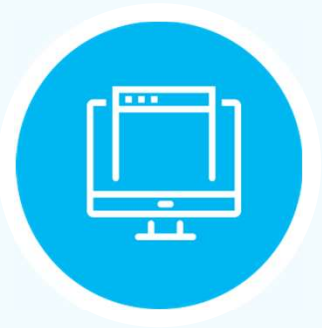


Content

- 01 Concrete model and loading review in RFEM 6
- 02 Member and surface reinforcement input data utilizing Concrete Design Add-on
- 03 Diaphragm and building element input data utilizing Building Model Add-on
- 04 Detailed review of analysis and design results



— Dlubal Software Information



- Videos and recorded webinars
- Events and conferences
- Knowledge Base articles
- FAQs

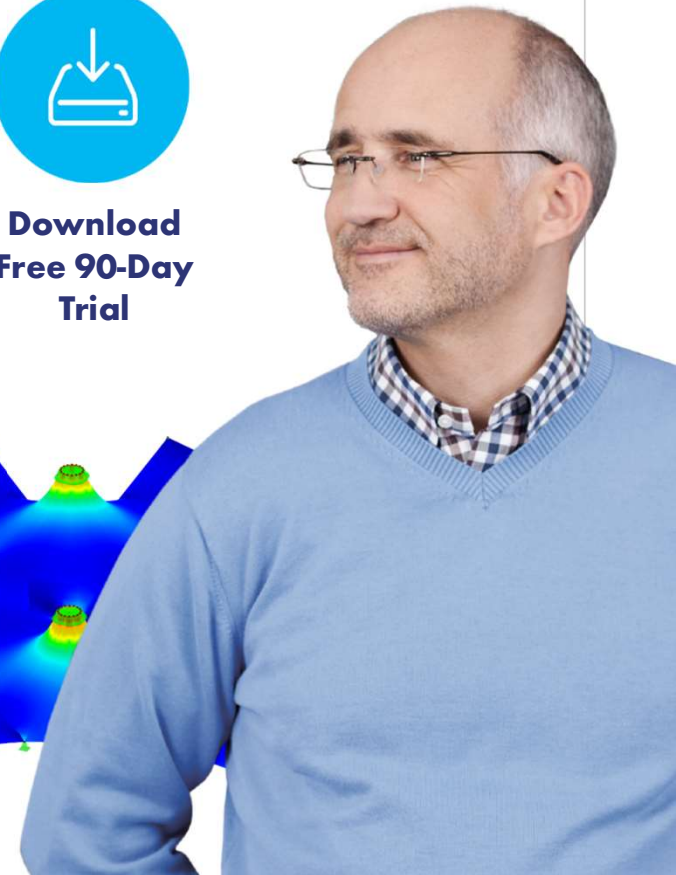
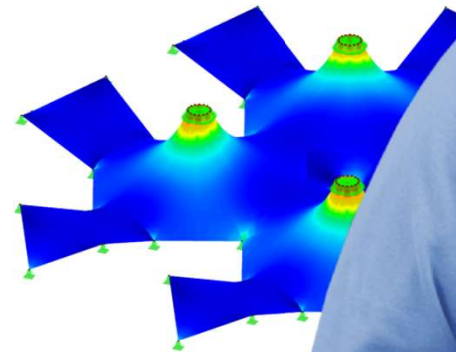
Visit website
www.dlubal.com



Register for
Online
Training



Download
Free 90-Day
Trial



Dlubal Software, Inc.
30 South 15th Street
15th Floor
Philadelphia, PA 19102

Phone: (267) 702-2815
Email: info-us@dlubal.com



Webinars and PDH

Upcoming Webinars

- 1 Register www.dlubal.com
- 2 Support & Learning → Webinars
- 3 Registration through email



PDH Certificates

- 1 Automatically emailed to participants
- 2 Available for the full presentation
- 3 Additional attendees request PDH to info-us@dlubal.com





www.dlubal.com