



Structural Analysis & Design Software

www.dlubal.com

RFEM 6 for Students



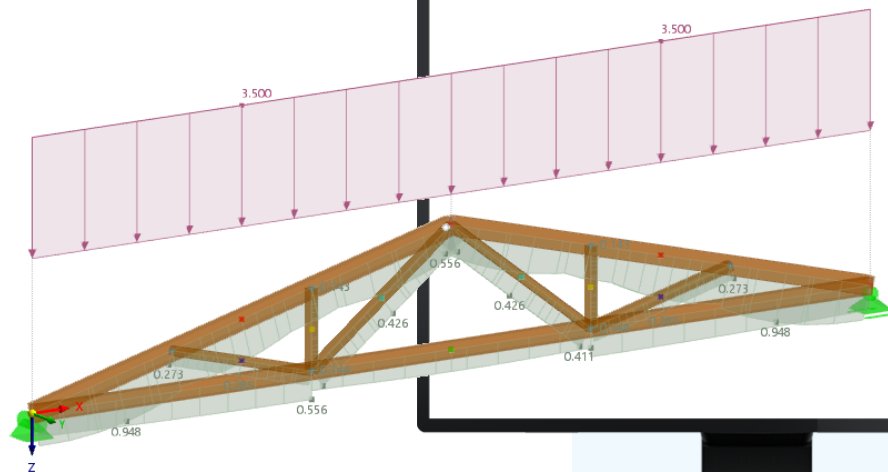
Dipl.-Ing. (FH) Jürgen Theilmann,
M.Eng.
Organizer

Customer Support
Dlubal Software GmbH



Dipl.-Ing. Rebecca Göbel
Co-Organizer

Customer Support
Dlubal Software GmbH



Questions During the Presentation



GoToWebinar Control Panel
Desktop



E-mail: info@dlubal.com



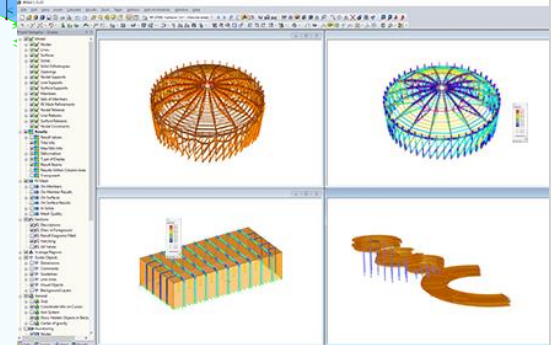
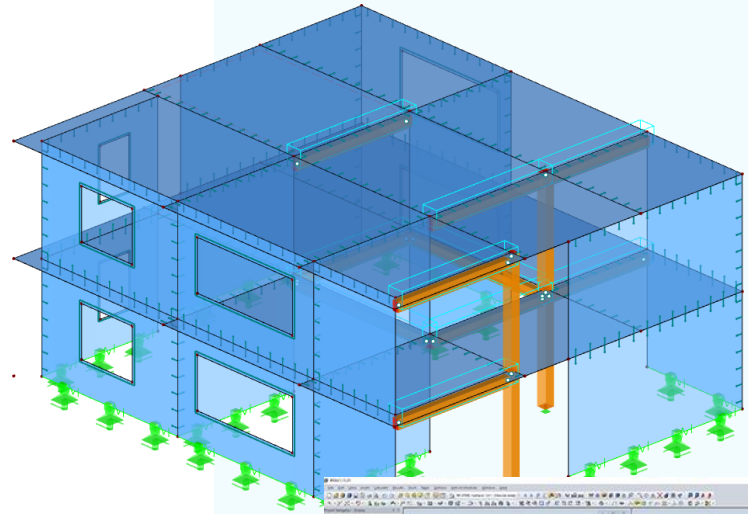
Adjust audio settings

Ask questions



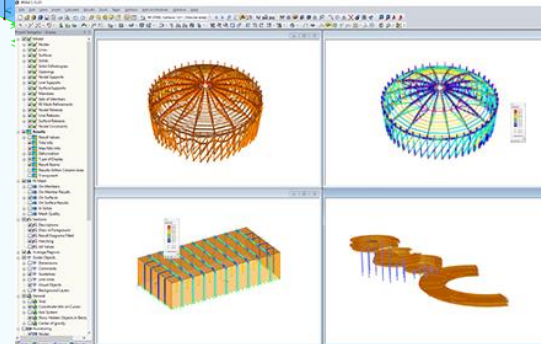
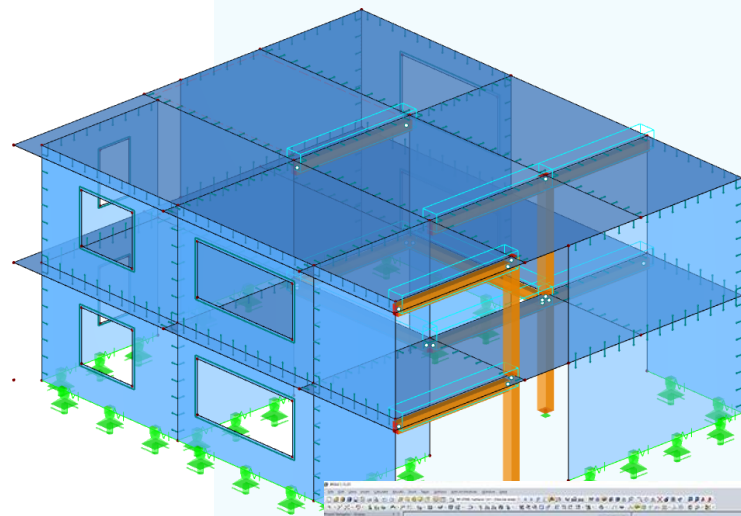
Training Series

- 01 Introduction to Member Design
- 02 Introduction to Strength of Materials
- 03 Introduction to FEM / FEA
- 04 Steel Design
- 05 Concrete Design
- 06 Timber Design



Training Series

- 01 Introduction to Member Design
- 02 Introduction to Strength of Materials
- 03 Introduction to FEM / FEA
- 04 Steel Design
- 05 Concrete Design
- 06 Timber Design



CONTENT

- 01 **Introductory Example: Timber Column**
- 02 **Design Supports & Notches**
- 03 **Duopitch Roof Beam**
- 04 **Truss**

